



Government of India
Ministry of Earth Sciences
India Meteorological Department



Press Release
Date: 02nd May 2026
Time of Issue: 1315 hours IST

Subject: (i) Fairly widespread to widespread rainfall along with thunderstorm, lightning and gusty winds (40-60 kmph) with heavy to very heavy rainfall likely over Sub Himalayan West Bengal & Sikkim and northeast India during the week.

(ii) Isolated to scattered thunderstorms, lightning & gusty winds (40-60 kmph) and hailstorm likely over Western Himalayan region, plains of northwest & adjoining central India during 03rd-06th May, 2026.

Realised weather during past 24 hours ending at 0830 hours IST of today, the 02nd May, 2026:

- ❖ **Heavy to very heavy rainfall (7-20 cm)** has been recorded at isolated places over Sub-Himalayan West Bengal.
- ❖ **Heavy rainfall (7-11 cm)** has been recorded at isolated places over Assam, Odisha, Bihar, Coastal Andhra Pradesh.
- ❖ **Squall** has been recorded over Gopalpur (Odisha) with maximum recorded wind speed of 92 kmph.
- ❖ **Thunderstorm accompanied with Squally/Gusty winds with speed reaching 50-70 kmph** prevailed at isolated places over Madhya Pradesh, Himachal Pradesh, Gujarat State, Jharkhand, Assam, Gangetic West Bengal, Odisha; **with speed reaching 30-50 kmph** prevailed at isolated places over Jammu-Kashmir, Uttarakhand, Chhattisgarh, Tripura, Marathwada, Konkan, Arunachal Pradesh, East Rajasthan and Madhya Maharashtra.
- ❖ **Hailstorm** reported over Jammu-Kashmir, Uttarakhand, South Interior Karnataka and Coastal Andhra Pradesh.
- ❖ **Duststorm** reported over East Rajasthan.

Temperature Conditions during past 24 hours till 0830 hours IST of today:

- ❖ **Maximum/day temperatures** were in the range of 38-40°C over most parts of Vidarbha, Telangana, Coastal Andhra Pradesh & Yanam; at isolated places over West Rajasthan; in the range of 34 -38°C over remaining parts of the country except over East Uttar Pradesh, Bihar, Gangetic West Bengal, Sub-Himalayan West Bengal & Sikkim, entire Northeast India and Western Himalayan region, where they were below 34°C. **Yesterday, the highest maximum temperature of 44.6°C was reported at Barmer (Rajasthan).**
- ❖ **Maximum/day temperatures** were appreciably above normal (3.1°C to 5.0°C) over Coastal Andhra Pradesh & Yanam; above normal (1.6 to 3.0°C) over Jammu-Kashmir, South Rajasthan, Gujarat State, Konkan, Tamil Nadu, Puducherry & Karaikal, Kerala & Mahe, Andaman & Nicobar Islands. These were below normal or near normal over rest parts of the country.
- ❖ **Minimum/night temperatures** were in the range of 13-19°C over Jammu-Kashmir, Himachal Pradesh, Sub-Himalayan West Bengal & Sikkim, Assam & Meghalaya, Mizoram, Tamil Nadu, Puducherry & Karaikal. They were in the range of 20-26°C over remaining parts of the plains of the country.
- ❖ **Minimum/night Temperature** were appreciably above normal (3.1°C to 5.0°C) over Saurashtra & Kutch; above normal (1.6 to 3.0°C) over Haryana, Rajasthan, West Madhya Pradesh, Gujarat Region, Vidarbha, Telangana, Rayalaseema, Coastal Andhra Pradesh & Yanam, Tamil Nadu, Puducherry & Karaikal and below normal or near normal over rest parts of the country.

Weather Systems, Forecast and Warnings (refer to ANNEXURE I & II):

- ❖ The **Western Disturbance** as a trough in middle tropospheric westerlies runs roughly along Long. 60°E to the north of Lat. 32°N.
- ❖ An upper air **cyclonic circulation** lies over West Rajasthan & neighbourhood and a north-south **trough** runs from this cyclonic circulation to Comorian area in lower tropospheric levels.
- ❖ An east-west **trough** runs from northeast Madhya Pradesh to Manipur in lower tropospheric levels.
- ❖ An upper air **cyclonic circulation** lies over north Haryana & neighbourhood in lower tropospheric levels.
- ❖ An upper air **cyclonic circulation** lies over north Bangladesh & adjoining Gangetic West Bengal in lower tropospheric levels with a trough aloft in middle to upper tropospheric levels runs roughly along Long. 87°E to the north of Lat. 20°N.

Under the influence of above systems, the following weather is likely:

Northwest India:

- ❖ **Scattered to fairly widespread** light to moderate rainfall/snowfall with **thunderstorm, lightning & gusty winds (speed reaching 40-50 kmph)** likely over Jammu-Kashmir during 02nd -06th May; Himachal Pradesh during 03rd -05th and Uttarakhand during 02nd-08th May.
- ❖ **Scattered to fairly widespread** light to moderate rainfall with **thunderstorm, lightning & gusty winds (speed reaching 30-50 kmph)** likely over Punjab during 03rd-06th; Haryana, Chandigarh during 02nd-06th; **isolated to scattered** light to moderate rainfall with **thunderstorm, lightning & gusty winds (speed reaching 30-40 kmph)** likely over Rajasthan during 02nd-08th; West Uttar Pradesh during 03rd-06th; East Uttar Pradesh during 04th-07th May.
- ❖ **Thundersquall (wind speed reaching 50-60 kmph gusting to 70 kmph)** likely over Punjab, Haryana Chandigarh on 04th & 05th and Rajasthan on 04th May.
- ❖ **Isolated Hailstorm activity** likely over Jammu-Kashmir on 03rd; Himachal Pradesh on 04th; Uttarakhand, Punjab, Haryana, Chandigarh on 04th & 05th May.
- ❖ **Duststorm** also likely over Rajasthan on 04th May.

Northeast India:

- ❖ **Fairly widespread to widespread** light to moderate rainfall with **thunderstorm, lightning gusty winds (speed reaching 30-50 kmph)** likely over Northeast India during next 5 days.
- ❖ **Isolated heavy rainfall** likely over Arunachal Pradesh, Assam & Meghalaya, Nagaland, Manipur, Mizoram & Tripura during 02nd-04th May with **isolated very heavy rainfall** likely over Assam & Meghalaya and Nagaland, Manipur, Mizoram & Tripura on 02nd May.

East India:

- ❖ **Fairly widespread to widespread** light to moderate rainfall with **thunderstorm, lightning gusty winds (speed reaching 30-50 kmph)** likely over West Bengal & Sikkim during next 5 days.
- ❖ **Isolated to scattered light** to moderate rainfall with **thunderstorm, lightning gusty winds (speed reaching 40-50 kmph)** likely over Jharkhand, Bihar and Odisha during next 7 days.
- ❖ **Thundersquall (wind speed reaching 50-60 kmph gusting to 70 kmph)** likely over West Bengal & Sikkim, Odisha on 04th & 05th; Jharkhand on 04th; Bihar on 04th & 06th May.
- ❖ **Isolated heavy rainfall** likely over Sub-Himalayan West Bengal & Sikkim during 02nd-04th; Bihar on 04th May with **isolated very heavy falls** over Sub-Himalayan West Bengal & Sikkim on 02nd May.
- ❖ **Isolated Hailstorm activity** likely over Jharkhand and Bihar on 04th May.

Central India:

- ❖ **Isolated** light to moderate rainfall with **thunderstorm, lightning gusty winds (speed reaching 40-50 kmph)** likely over Madhya Pradesh and Chhattisgarh during next 5 days; Vidarbha during 03rd-06th May.
- ❖ **Thundersquall (wind speed reaching 50-60 kmph gusting to 70 kmph)** likely over Chhattisgarh on 03rd & 04th; East Madhya Pradesh & Vidarbha on 04th & 05th; West Madhya Pradesh on 05th May.

South Peninsular India:

- ❖ **Isolated to scattered** light to moderate rainfall with **thunderstorm, lightning & gusty winds (speed reaching 30-50 kmph)** likely over Tamil Nadu, Puducherry & Karaikal, Kerala & Mahe, South Interior Karnataka, Coastal Andhra Pradesh & Yanam, Rayalaseema, Telangana during 02nd-06th; Lakshadweep & North Interior Karnataka on 02nd May; **with lightning** over Coastal Karnataka on 02nd May.
- ❖ **Thundersquall (wind speed reaching 50-60 kmph gusting to 70 kmph)** likely over Coastal Andhra Pradesh & Yanam on 02nd & 03rd May.
- ❖ **Heavy rainfall** also likely over Tamil Nadu, Puducherry & Karaikal and Kerala & Mahe during 02nd-08th; South Interior Karnataka during 04th-08th; Coastal Andhra Pradesh & Yanam and Telangana on 05th & 06th May.

Forecast of maximum/day temperatures:

- ❖ Gradual rise in maximum temperatures by 2-3°C likely over Northwest India till 02nd May; gradual fall by 2-3°C during 03rd-05th May and no significant change during 06th-08th May.
- ❖ No significant change in maximum temperatures likely over Central India till 04th May and gradual fall by 2-3°C during 05th-07th May.
- ❖ No significant change in maximum temperatures likely over Gujarat State till 02nd May; gradual fall by 2-3°C during 03rd-05th May and no significant change during 06th-08th May.

- ❖ No significant change in maximum temperatures likely over rest parts of the country till 08th May 2026.

Heat wave conditions and Hot & Humid weather conditions warning:

- ❖ **Heat wave conditions** very likely in isolated pockets of Coastal Andhra Pradesh on 02nd & 03rd May.
- ❖ **Hot & humid weather conditions** very likely to prevail in isolated pockets over Tamil Nadu, Puducherry & Karaikal during 02nd-04th; Coastal Karnataka on 02nd and Coastal Andhra Pradesh & Yanam on 04th & 05th May.

Fishermen warning:

- ❖ Fishermen are advised not to venture into the following areas:
- ❖ **Bay of Bengal:** Along and off Odisha Coast and adjoining North Andhra Pradesh Coast, West Bengal Coast and adjoining Bangladesh Coast & over many parts of northwest Bay of Bengal, adjoining parts of northeast Bay of Bengal on 02nd May; along and off Odisha, West Bengal Coasts and adjoining Bangladesh Coast & over some parts of northwest Bay of Bengal, adjoining parts of northeast Bay of Bengal on 03rd and 04th May.
- ❖ **Arabian Sea:** Along and off Gujrat Coast & adjoining sea area on 02nd May.

Weather conditions and forecast over Delhi/NCR during 02nd -05th May, 2026 (ANNEXURE III)

For more details, kindly refer National Weather Bulletin:

https://mausam.imd.gov.in/responsive/all_india_forcast_bulletin.php

For District wise warnings refer: <https://mausam.imd.gov.in/responsive/districtWiseWarningGIS.php>

For Fishermen warning refer <https://rsmcnewdelhi.imd.gov.in/fishermenwarning.php>

Significant rainfall recorded (in cm) (from 0830 hours IST of yesterday to 0830 hours IST of today):

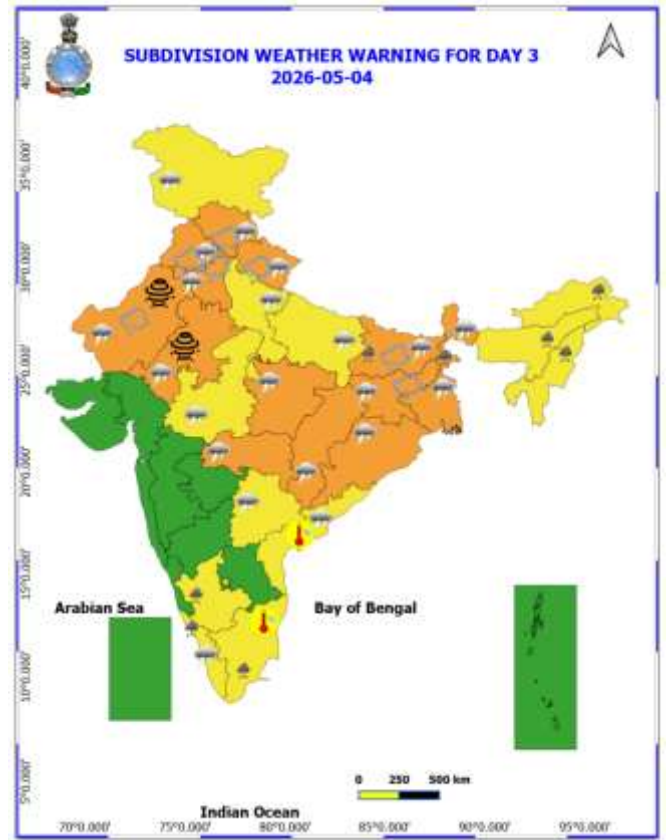
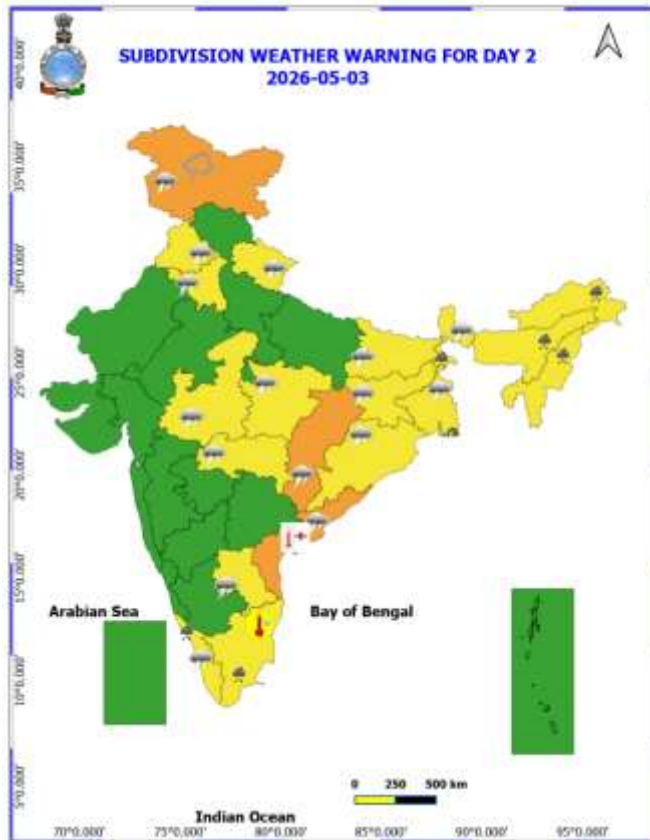
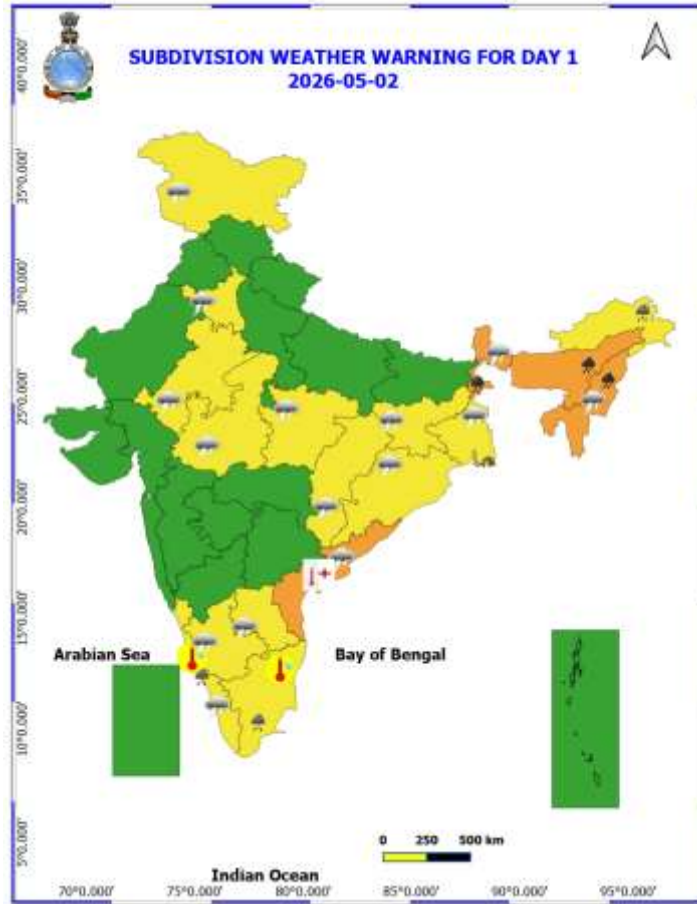
- ❖ **Sub-Himalayan West Bengal & Sikkim:** Ghish (dist Jalpaiguri) 16, Sevoke (dist Darjeeling) 15, Washabari Tea Estate (dist Jalpaiguri) 13, Gurjonghora Tea Estate (dist Jalpaiguri) 12, Mekhliganj (dist Cooch Behar) 12, Chalouni Tea Estate (dist Jalpaiguri) 11, Leesh River Tea Garden (dist Jalpaiguri) 11, Amfu Majhian (dist South Dinajpur) 10, Maynaguri College (dist Jalpaiguri) 8, Nh31 Bridge (dist Jalpaiguri) 7, Buxaduar (dist Alipurduar) 7, Balurghat (dist South Dinajpur) 7, Jaybirpara Tea Estate (dist Alipurduar) 7, Bagdogra Iaf (dist Darjeeling) 7;
- ❖ **Bihar:** Dhengraghat (dist Purnea), Kasba (dist Purnea), Pranpur (dist Katihar) 11 Each; Kessariah (dist East Champaran), Bettiah (dist West Champaran), Kalyanpur (dist East Champaran) 8 Each; Purnea (dist Purnea), Katihar (dist Katihar), Sameli (dist Katihar) 7 Each;
- ❖ **Coastal Andhra Pradesh:** Gantiyada (dist Vizianagaram) 8;
- ❖ **Assam:** B P Ghat (dist Sribhumi) 9;
- ❖ **Odisha:** Kandhamal 7.

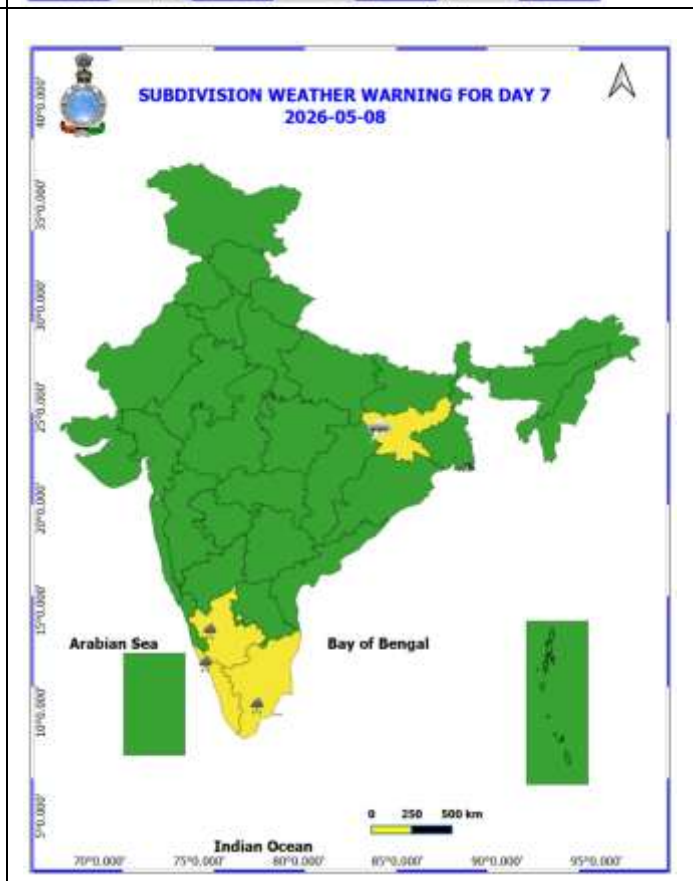
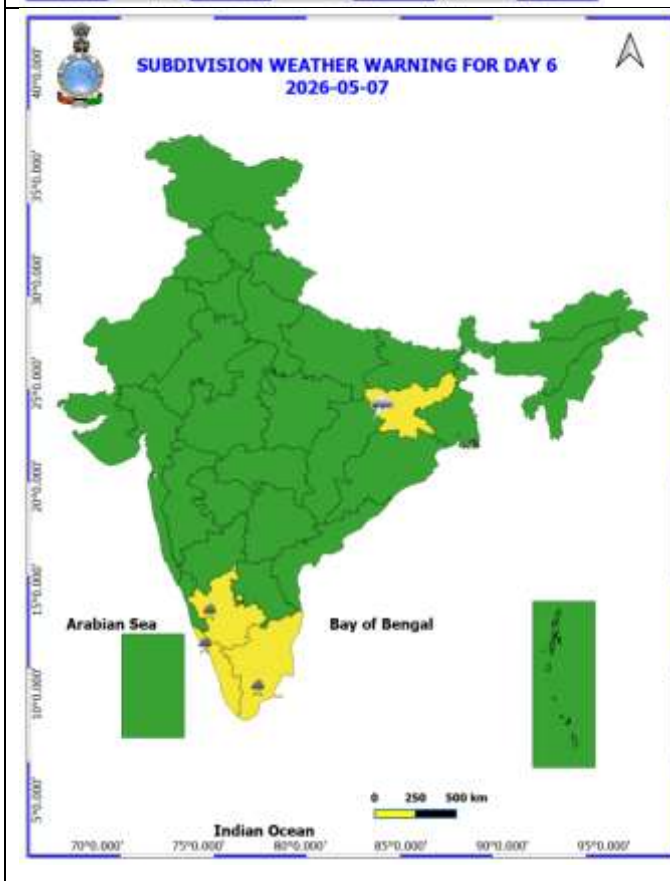
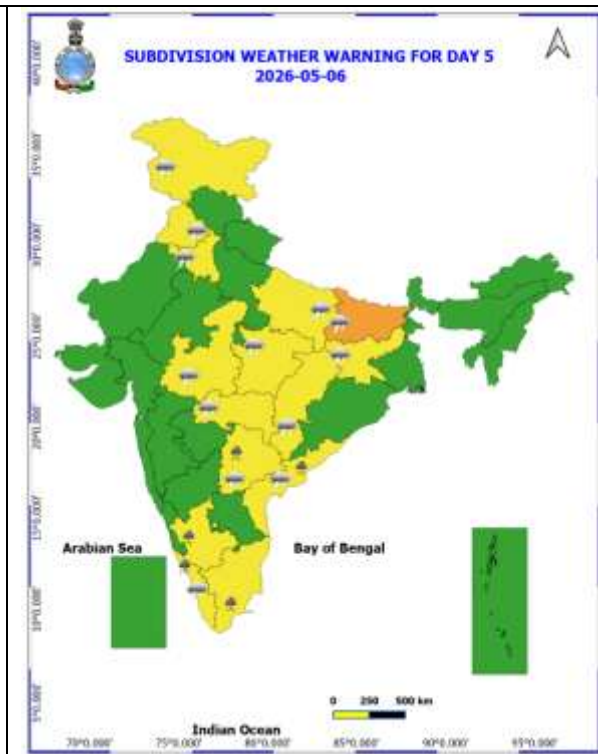
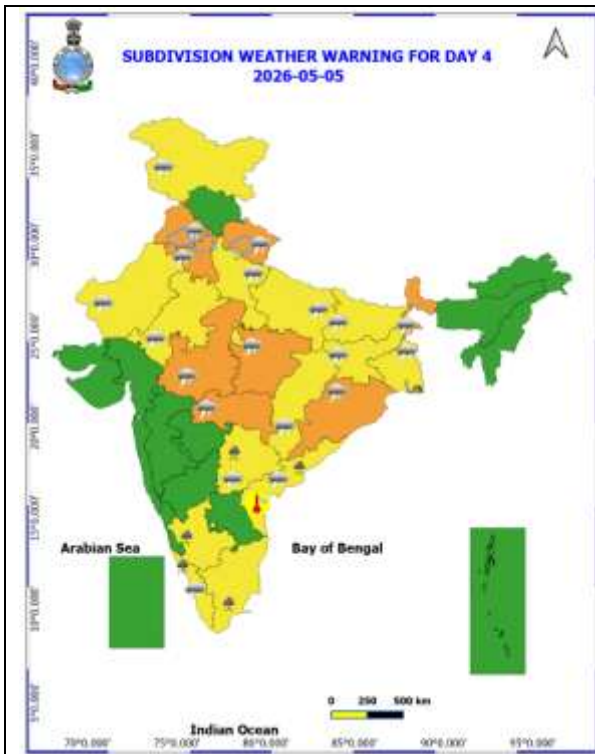
Gusty winds (in kmph) (from 0830 hours IST of yesterday to 0830 hours IST of today):

- ❖ **Odisha:** Gopalpur 92;
- ❖ **Gangetic West Bengal:** Jhargram 72; Shyampur, Kharagpur 46;
- ❖ **East Madhya Pradesh:** Jabalpur 63, Sagar 43, Shahdol 41;
- ❖ **Assam:** Manas 59;
- ❖ **Jharkhand:** East Singhbhum 57;
- ❖ **Saurashtra & Kutch:** Bhachau (Kutch) 56;
- ❖ **Gujarat Region:** Arnej 54;
- ❖ **Himachal Pradesh:** Tabo 52;
- ❖ **West Madhya Pradesh:** Sehore 50, Guna, Indore 37, Ashoknagar, Agar 37, Shivpuri 33, Bhopal, Ujjain, Barwani 31, Vidisha, Dhar 30;
- ❖ **Madhya Maharashtra:** Kalwan (Nashik) 48, Niasm_Baramati (Pune) 46, Shahada (Nandurbar) 46;
- ❖ **East Rajasthan:** Jaipur 46;
- ❖ **Arunachal Pradesh:** Anini 43;
- ❖ **Konkan:** Karjat (Raigad) 37, Palghar 33;
- ❖ **Marathawada:** Ambejogai (Beed) 37, Dharashiv (Dharashiv) 31, Udgir (Latur) 31;
- ❖ **Tripura:** A D Nagar 35;
- ❖ **Chhattisgarh:** Mungeli 33, Balod 31;
- ❖ **Jammu-Kashmir:** Chatha 31, Kupwara 30;
- ❖ **Uttarakhand:** Champawat 31, Jollygrant 31, Ranichauri 30

Table-1								
7 Days Rainfall Forecast								
S.No.	Subdivision	2- May	3- May	4- May	5- May	6- May	7- May	8- May
		Day 1	Day 2	Day 3	Day 4	Day 5	Day 6	Day 7
1	ANDAMAN & NICOBAR ISLANDS	ISOL	ISOL	ISOL	ISOL	ISOL	SCT	SCT
2	ARUNACHAL PRADESH	FWS	FWS	FWS	SCT	SCT	FWS	FWS
3	ASSAM & MEHGHALAYA	FWS	FWS	FWS	SCT	FWS	FWS	SCT
4	NAGALAND, MANIPUR, MIZORAM AND TRIPURA	FWS	FWS	FWS	FWS	SCT	SCT	ISOL
5	SUB HIMALAYAN WEST BENGAL & SIKKIM	FWS	FWS	FWS	FWS	FWS	SCT	SCT
6	GANGETIC WEST BENGAL	SCT	SCT	FWS	FWS	FWS	SCT	SCT
7	ODISHA	ISOL	ISOL	SCT	SCT	ISOL	ISOL	ISOL
8	JHARKHAND	ISOL	ISOL	SCT	SCT	SCT	SCT	SCT
9	BIHAR	ISOL	ISOL	FWS	ISOL	SCT	ISOL	ISOL
10	EAST UTTAR PRADESH	ISOL	ISOL	SCT	SCT	SCT	SCT	ISOL
11	WEST UTTAR PRADESH	DRY	ISOL	SCT	SCT	SCT	ISOL	ISOL
12	UTTARAKHAND	ISOL	FWS	FWS	FWS	SCT	SCT	SCT
13	HARYANA, CHANDIGARH & DELHI	ISOL	ISOL	FWS	SCT	ISOL	ISOL	ISOL
14	PUNJAB	ISOL	ISOL	FWS	SCT	ISOL	ISOL	ISOL
15	HIMACHAL PRADESH	ISOL	FWS	FWS	FWS	SCT	SCT	ISOL
16	JAMMU AND KASHMIR AND LADAKH	SCT	FWS	FWS	FWS	SCT	ISOL	ISOL
17	WEST RAJASTHAN	ISOL	ISOL	ISOL	ISOL	ISOL	ISOL	ISOL
18	EAST RAJASTHAN	ISOL	ISOL	ISOL	ISOL	ISOL	ISOL	ISOL
19	WEST MADHYA PRADESH	ISOL	ISOL	ISOL	ISOL	ISOL	ISOL	ISOL
20	EAST MADHYA PRADESH	ISOL	ISOL	ISOL	ISOL	ISOL	ISOL	ISOL
21	GUJRAT REGION	DRY	DRY	DRY	DRY	DRY	DRY	DRY
22	SAURASHTRA & KUTCH	DRY	DRY	DRY	DRY	DRY	DRY	DRY
23	KONKAN & GOA	DRY	DRY	DRY	DRY	DRY	DRY	DRY
24	MADHYA MAHARASHTRA	DRY	DRY	DRY	DRY	DRY	DRY	DRY
25	MARATHWADA	DRY	DRY	DRY	ISOL	ISOL	ISOL	ISOL
26	VIDARBHA	DRY	DRY	ISOL	ISOL	ISOL	ISOL	ISOL
27	CHHATTISGARH	ISOL	ISOL	SCT	SCT	ISOL	ISOL	ISOL
28	COASTAL ANDHRA PRADESH	ISOL	ISOL	SCT	SCT	SCT	SCT	ISOL
29	TELANGANA	ISOL	ISOL	SCT	SCT	SCT	SCT	SCT
30	RAYALASEEMA	ISOL	ISOL	ISOL	ISOL	ISOL	ISOL	ISOL
31	TAMILNADU & PUDUCHERRY	SCT	ISOL	SCT	SCT	SCT	SCT	FWS
32	COSTAL KARNATAKA	ISOL	ISOL	ISOL	ISOL	ISOL	ISOL	ISOL
33	NORTH INTERIOR KARNATAKA	ISOL	ISOL	ISOL	ISOL	ISOL	ISOL	ISOL
34	SOUTH INTERIOR KARNATAKA	ISOL	ISOL	ISOL	SCT	ISOL	ISOL	ISOL
35	KERALA AND MAHE	FWS	SCT	SCT	FWS	FWS	FWS	FWS
36	LAKSHADWEEP	SCT	SCT	SCT	SCT	SCT	SCT	SCT

- As the lead period increases forecast accuracy decrease.





- Action may be taken based on ORANGE AND REDCOLOUR warnings.
- Vulnerable regions likely urban and hilly areas action may be initiated for heavy rainfall warning.
- As the lead period increases forecast accuracy decreases.

Detailed district-wise Multi-Hazard weather warning for next five days available at <https://mausam.imd.gov.in/responsive/districtWiseWarningGIS.php>

Weather forecast over Delhi/NCR during 02nd May to 05th May 2026

Past Weather:

There has been fall in maximum temperatures up to 3-4°C and rise in minimum temperatures up to 2-4°C during past 24 hours over Delhi. The minimum temperatures are in the range of 24-26°C and maximum temperatures are in the range of 35- 36°C during past 24 hours over Delhi. The minimum temperatures are above normal (1.6°C to 3.0°C) at a few places, below normal (-1.6°C to - 3.0°C) at isolated places and normal (-1.5°C to 1.5°C) over rest of the parts of Delhi. The maximum temperatures are markedly below normal (-5.1°C or less) at few places and appreciably below normal (-3.1°C to -5.0°C) at most places and below normal (-1.6°C to -3.0°C) at isolated places over Delhi. Partly cloudy sky with surface wind speeds up to 16 kmph prevailed from southeast direction over Delhi during past 24 hours. Partly cloudy sky with surface wind speeds up to 15 kmph likely to prevailed from southeast direction over the region in the forenoon today.

Weather Forecast:

02.05.2026: Partly cloudy sky. The maximum temperatures over Delhi are likely to be in the range of 38°C to 40°C. The maximum temperatures will be near normal (-1.5°C to 1.5°C) at most places over Delhi. The predominant surface wind is likely to be from the southeast direction with surface wind speed reaching up to 15 kmph during the afternoon hours. The wind speed will gradually decrease becoming less than 10 kmph from the northeast direction during evening and night.

03.05.2026: Partly cloudy sky becoming generally cloudy sky towards afternoon. A spell of very light to light rain accompanied with thunderstorm/lightning and strong winds speed 30-40 kmph gusting to 50 kmph during afternoon to evening. The maximum and minimum temperatures over Delhi are likely to be in the range of 36°C to 38°C and 26°C to 28°C respectively. The minimum temperature will be above normal (1.6°C to 3.0°C) at most places, and the maximum temperature will be below normal (-1.6 to -3.0°C) at most places over Delhi. The predominant surface wind is likely to be from the southeast direction with wind reaching up to 20 kmph during the morning hours. The surface wind speed will be increase becoming up to 25 kmph from southeast direction during the afternoon. The surface wind will decrease becoming up to 20 kmph from southeast direction during evening and night.

04.05.2026: Generally cloudy sky. One or two spells of very light to light rain accompanied with thunderstorm/lightning and strong winds speed 30-40 kmph gusting to 50 kmph during morning to afternoon. The maximum and minimum temperatures over Delhi are likely to be in the range of 35°C to 37°C and 25°C to 27°C respectively. The minimum temperature will be above normal (1.6°C to 3.0°C) at most places, and the maximum temperature will be appreciably below normal (-3.1°C to -5.0°C) at most places over Delhi. The predominant surface wind is likely to be from the southeast direction with wind reaching up to 20 kmph during the morning hours. The surface wind speed will decrease becoming up to 15 kmph from southeast direction during the afternoon. The surface wind speed will increase becoming less than 20 kmph from the southeast direction during evening and night.

05.05.2026: Generally cloudy sky. One or two spells of very light to light rain accompanied with thunderstorm/lightning and strong surface winds speed 20-30 kmph gusting to 40 kmph during forenoon to afternoon. The maximum and minimum temperatures over Delhi are likely to be in the range of 35°C to 37°C and 22°C to 24°C respectively. The minimum temperature will be near normal (-1.5°C to 1.5°C) at most places, and the maximum temperature will be appreciably below normal (-3.1°C to -5.0°C) at most places over Delhi. The predominant surface wind is likely to be from the southeast direction with wind reaching up to 20 kmph during the morning hours. The surface wind speed will decrease slightly and becoming up to 18 kmph from southeast direction during the afternoon. The surface wind speed will be decrease becoming less than 15 kmph from the southeast direction during evening and night.

Impact expected and action suggested due to thunderstorm with lightning/gusty winds:

- **Warning:** Thunderstorms with lightning and gusty winds (30–40 kmph, gusting up to 50 kmph) along with dust-raising surface winds are likely.
- **Impacts:** Breaking of tree branches, uprooting of trees, damage to crops, disruption to power and communication lines, partial damage to weak structures, and loose objects being blown away.
- **Advisory:** Stay indoors and keep windows and doors closed. Avoid travel if possible. Do not take shelter under trees. Stay away from concrete walls/floors, water bodies, and electrical conductors. Unplug electronic devices and remain alert for worsening weather conditions.

Impact expected and action suggested due to isolated thunderstorm with lightning/squally winds & Hailstorm over

- ❖ **Thundersquall (wind speed reaching 50-60 kmph gusting to 70 kmph)** likely over Coastal Andhra Pradesh & Yanam on 02nd & 03rd; Chhattisgarh on 03rd & 04th; Punjab, Haryana, Chandigarh, West Bengal & Sikkim, Odisha, East Madhya Pradesh & Vidarbha on 04th & 05th; Rajasthan & Jharkhand on 04th; Bihar on 04th & 06th; West Madhya Pradesh on 05th May.
- ❖ Isolated **Hailstorm activity** likely over Jammu-Kashmir on 03rd; Himachal Pradesh, Jharkhand & Bihar on 04th; Uttarakhand, Punjab, Haryana, Chandigarh on 04th & 05th May.

Impact expected:

- Breaking of tree branches, uprooting of large avenue trees. Large dead limbs blown from trees. Damage to Standing crops.
- Minor to Major damage to banana and papaya trees.
- Minor to major damage to power and communication lines due to breaking of branches.
- Strong wind/hail may damage plantation, horticulture and standing crops.
- Hail may injure people and cattle at open places.
- Partial damage to vulnerable structures due to strong winds.
- Minor damage to kutcha houses/walls and huts.
- Loose objects may fly.

Action suggested:

- People are advised to keep a watch on the weather for worsening conditions and be ready to move to safer places accordingly.
- Stay indoors, close windows & doors and avoid travel if possible.
- Take safe shelters; do not take shelter under trees.
- Do not lie on concrete floors and do not lean against concrete walls.
- Unplug electrical/ electronic appliances.
- Immediately get out of water bodies.
- Keep away from all the objects that conduct electricity.

Impact Expected & Action Suggested due to heavy/very heavy rainfall over

- ❖ **Isolated heavy rainfall** likely over Sub-Himalayan West Bengal & Sikkim, Arunachal Pradesh, Assam & Meghalaya, Nagaland, Manipur, Mizoram & Tripura during 02nd-04th; Tamil Nadu, Puducherry & Karaikal and Kerala & Mahe during 02nd-08th; Bihar on 04th; South Interior Karnataka during 04th-08th; Coastal Andhra Pradesh & Yanam and Telangana on 05th & 06th with isolated **very heavy rainfall** likely over Assam & Meghalaya and Nagaland, Manipur, Mizoram & Tripura, Sub-Himalayan West Bengal & Sikkim on 02nd May.

Impact Expected

- Localized Flooding of roads, water logging in low lying areas and closure of underpasses mainly in urban areas.
- Occasional reduction in visibility due to heavy rainfall.
- Disruption of traffic in major cities due to water logging in roads leading to increased travel time.
- Minor damage to kutcha roads.
- Possibilities of damage to vulnerable structure.
- Localized Landslides/Mudslides/landslips/mudslips/landsinks/mudsinks.
- Damage to horticulture and standing crops in some areas due to inundation.
- It may lead to riverine flooding in some river catchments (for riverine flooding please visit Web page of CWC)

Action Suggested

- Check for traffic congestion on your route before leaving for your destination.
- Follow any traffic advisories that are issued in this regard.
- Avoid going to areas that face the water logging problems often.
- Avoid staying in vulnerable structure.

Impact expected and action suggested due to Heat wave conditions

- ❖ **Heat wave conditions** very likely in isolated pockets of Coastal Andhra Pradesh on 02nd & 03rd May.

Alert Areas

- High temperature & increased likelihood of heat illness symptoms in people who are either exposed to sun for a prolonged period or doing heavy work.
- High health concern for vulnerable people e.g. infants, elderly, people with chronic diseases.
- Avoid heat exposure– keep cool. Avoid dehydration.
- Drink sufficient water- even if not thirsty.
- Use ORS, homemade drinks like lassi, torani (rice water), lemon water, buttermilk, etc. to keep yourself hydrated.

Agromet advisories for likely impact of Hailstorms

- In **Bihar, Jharkhand, Jammu & Kashmir, Himachal Pradesh, Haryana, Uttarakhand and West Rajasthan** use hail nets or hail caps in fruit orchards and vegetable plants to protect them from mechanical damage.
- Ensure effective field drainage to prevent waterlogging. Undertake picking of matured fruits at the earliest. Keep the harvested produce in safe places.

Agromet advisories for likely impact of Heavy Rainfall

- In **Arunachal Pradesh**, postpone the sowing of WRC paddy nurseries. Ensure proper drainage in the fields of rice, maize, other standing crops, vegetables, and orchards. Keep the harvested cabbage, pea, mustard, late-maturing paddy & potatoes produce to safe places.
- In **Assam**, maintain proper drainage to avoid water stagnation in the crop fields. Prioritise immediate harvesting of the mature crops and move the produce to a dry, covered warehouse during clear weather conditions. Provide mechanical support for tall crops (like banana or sugarcane) and young saplings by using bamboo sticks or poles.
- **Meghalaya**- Provide proper drainage in maize, ginger, vegetables and orchards. Provide staking/bamboo support to prevent lodging.
- In **Manipur**, postpone sowing of soybean and groundnut. Drain out excess rainwater and top-dress the crop after the current rain spells. Avoid rainwater stagnation for long periods in crop fields (chilli, ginger, turmeric, banana, etc.).
- In **Mizoram**, create drainage channels surrounding the rice fields and utilize grass mulch to cover the seeds. Provide support to fruit-bearing or partially lodge plants/trees. Propping should be done to prevent maize plants from lodging.
- In **Nagaland**, Maintain drainage in low-lying areas and in crop fields (potato, foxtail millet. Keep the maize field covered with locally available mulch, such as farm residue or paddy straw. Provide propping to the banana plant to prevent lodging.
- **Tripura** - Ensure proper drainage to prevent standing water in vegetable, watermelon, and orchard fields.
- In **West Bengal and Sikkim**, ensure proper field drainage to prevent waterlogging, particularly in ginger, tomato, and *Dalle Khorsani* fields. Protect the nurseries of cucurbits and *Dalle Khorsani* by covering them with polythene sheets or agro-net to safeguard young seedlings. Additionally, apply locally available mulching materials in ginger fields to minimize the direct impact of rainfall.
- In **Bihar**, postpone irrigation, inter-cultural operations and application of plant protection measures & fertilizers to the standing crops. Provide adequate drainage in standing crop fields to avoid waterlogging.
- In **Kerala**, provide adequate drainage for banana, coconut, and other vegetables. Provide support to banana plants.
- In **Tamilnadu**, maintain proper drainage to avoid water stagnation in blackgram, green gram, sugarcane, plantations and vegetables.

Agromet advisories for likely impact of High temperatures/ Heat Waves

- **Andhra Pradesh** - Provide light irrigation to maintain adequate moisture in standing crops, vegetables, and fruit orchards.
- Carry out mulching with crop residue, straw or polythene to minimize the loss of soil moisture in the standing crops.

Agromet advisories for likely impact of Thunderstorm / Gusty Winds

- Shift the harvested produce in safer places or cover the produce with tarpaulin sheets in the fields. Tie the harvested crops securely and cover them to minimize the risk of displacement from strong surface winds.
- Provide mechanical support to horticultural crops and staking or support to vegetables and young fruit plants / fruit-bearing plants to avoid lodging due to strong winds.

Livestock / Poultry / Fisheries

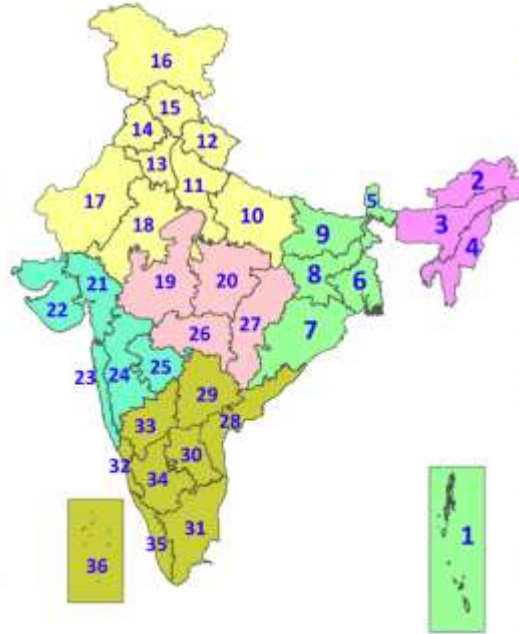
- Keep the animals inside the shed during heavy rainfall and provide them balanced feed.
- Store feed and fodder in a safe place to prevent spoilage.
- Construct an outlet with proper netting around the ponds to drain excess water, thereby preventing fish from escaping in the event of overflow.
- In regions with high temperatures and heat waves, provide clean, hygienic, and ample drinking water for animals, and cover the roofs of poultry sheds with grass to reduce the adverse effects.

Legends & abbreviations:

- ❖ **Heavy Rain:**64.5115.5mm; **Very Heavy Rain:**115.6204.4mm; **Extremely Heavy Rain:** >204.4mm.
- ❖ **Obsy:** Observatory; Automatic Weather Station; **ARG:** Automatic Rain Gauge; **dist:** District; **NH:** National Highway; **KVK:** Krishi Vigyan Kendra; **DVC:** Damodar Valley Corporation; **PTO:** Part Time Office, **Aero:** Aerodrome, **IAF:** Indian Air Force.
- ❖ **Region wise classification of meteorological Sub-Divisions:**
 - **Northwest India:** Western Himalayan Region (Jammu-Kashmir-Ladakh-Gilgit-Baltistan-Muzaffarabad, Himachal Pradesh and Uttarakhand); Punjab, Haryana Chandigarh & Delhi; West Uttar Pradesh, East Uttar Pradesh, West Rajasthan and East Rajasthan.
 - **Central India:** West Madhya Pradesh, East Madhya Pradesh, Vidarbha and Chhattisgarh.
 - **East India:** Bihar, Jharkhand, Sub-Himalayan West Bengal & Sikkim; Gangetic West Bengal, Odisha and Andaman & Nicobar Islands.
 - **Northeast India:** Arunachal Pradesh, Assam & Meghalaya and Nagaland, Manipur, Mizoram & Tripura.
 - **West India:** Gujarat Region, Saurashtra & Kutch, Coastal Maharashtra (Konkan) & Goa, Madhya Maharashtra and Marathawada.
 - **South India:** Coastal Andhra Pradesh & Yanam, Telangana, Rayalaseema, Coastal Karnataka, North Interior Karnataka, South Interior Karnataka, Kerala & Mahe, Tamil Nadu, Puducherry & Karaikal and Lakshadweep.

LEGENDS

1. अंडमान और निकोबार द्वीपसमूह
2. अरुणाचल प्रदेश
3. असम और मेघालय
4. नागालैंड, मणिपुर, मिजोरम और त्रिपुरा
5. उप-हिमालयी पश्चिम बंगाल और सिक्किम
6. गंगीय पश्चिम बंगाल
7. ओडिशा
8. झारखंड
9. बिहार
10. पूर्वी उत्तर प्रदेश
11. पश्चिम उत्तर प्रदेश
12. उत्तराखंड
13. हरियाणा, चंडीगढ़ और दिल्ली
14. पंजाब
15. हिमाचल प्रदेश
16. जम्मू और कश्मीर और लद्दाख
17. पश्चिम राजस्थान
18. पूर्वी राजस्थान
19. पश्चिम मध्य प्रदेश
20. पूर्वी मध्य प्रदेश
21. गुजरात
22. सौराष्ट्र
23. कोंकण और गोवा
24. मध्य महाराष्ट्र
25. मराठवाड़ा
26. विदर्भ
27. छत्तीसगढ़
28. तटीय आंध्र प्रदेश और यनम
29. तेलंगाना
30. रायलसीमा
31. तमिलनाडु, पुडुचेरी और कराईकल
32. तटीय कर्नाटक
33. आंतरिक उत्तरी कर्नाटक
34. आंतरिक दक्षिणी कर्नाटक
35. केरल और माहे
36. लक्षद्वीप



1. Andaman & Nicobar Islands
2. Arunachal Pradesh
3. Assam & Meghalaya
4. Nagaland, Manipur, Mizoram & Tripura
5. Sub-Himalayan West Bengal & Sikkim
6. Gangetic West Bengal
7. Odisha
8. Jharkhand
9. Bihar
10. East Uttar Pradesh
11. West Uttar Pradesh
12. Uttarakhand
13. Haryana, Chandigarh & Delhi
14. Punjab
15. Himachal Pradesh
16. Jammu & Kashmir and Ladakh
17. West Rajasthan
18. East Rajasthan
19. West Madhya Pradesh
20. East Madhya Pradesh
21. Gujarat
22. Saurashtra
23. Konkan & Goa
24. Madhya Maharashtra
25. Marathwada
26. Vidarbha
27. Chhattisgarh
28. Coastal Andhra Pradesh & Yanam
29. Telangana
30. Rayalaseema
31. Tamilnadu, Puducherry & Karaikal
32. Coastal Karnataka
33. North Interior Karnataka
34. South Interior Karnataka
35. Kerala & Mahe
36. Lakshadweep

SPATIAL DISTRIBUTION (% of Stations reporting)

% Stations	Category	% Stations	Category
76-100	Widespread (WS/Most Places)	26-50	Scattered (SCT/A Few Places)
51-75	Fairly Widespread (FWS/Many Places)	1-25	Isolated (ISOL)

- | | | |
|----------------------|----------------------|--------------|
| Fog | Heavy Snow | Cold Wave |
| Heavy Rain | Dust Storm | Cold Day |
| Very Heavy Rain | Heat Wave | Ground Frost |
| Extremely Heavy Rain | Warm Night | |
| Thunder & Lightning | Hot Day | |
| Hailstorm | Hot & Humid | |
| Dust Raising Winds | Strong Surface Winds | |

COLOUR CODED WARNING

No Warning (No Action)
Watch (Be Aware)
Alert (Be Prepared To Take Action)
Warning (Take Action)

Probabilistic Forecast

Terms	Probability of Occurrence (%)
Unlikely	< 25
Likely	25 - 50
Very Likely	50 - 75
Most Likely	> 75

* Red colour warning does not mean "Red Alert", Red colour warning means "Take Action".
Forecast and Warning for any day is valid from 0830 hours IST of day till 0830 hours IST of next day.
For more details, kindly visit <https://mausam.imd.gov.in> or contact: 011-2434-4599
(Service to the Nation since 1875)

DEFINITION/CRITERIA

Rain/ Snow *	<p>Heavy: 64.5 to 115.5 mm/cm *</p> <p>Very Heavy: 115.6 to 204.4 mm/cm*</p> <p>Extremely Heavy: > 204.4 mm/cm *</p>
Heat Wave	<p>When maximum temperature of a station reaches $\geq 40^{\circ}\text{C}$ for plains and $\geq 30^{\circ}\text{C}$ for hilly regions</p> <p>(a) Based on Departure from normal</p> <p>Heat Wave: Maximum Temperature Departure from normal 4.5°C to 6.4°C.</p> <p>Severe Heat Wave: Maximum Temperature Departure from normal $\geq 6.5^{\circ}\text{C}$</p> <p>(b). Based on Actual maximum temperature</p> <p>Heat Wave: When actual maximum temperature $\geq 45^{\circ}\text{C}$.</p> <p>Severe Heat Wave: When actual maximum temperature $\geq 47^{\circ}\text{C}$</p> <p>(c). Criteria for heat wave for coastal stations</p> <p>When maximum temperature departure is $>4.5^{\circ}\text{C}$ from normal. Heat Wave may be described provided maximum temperature $\geq 37^{\circ}\text{C}$</p>
Warm Night	<p>When maximum temperature remains 40°C</p> <p>Warm Night: When minimum temperature departure 4.5°C to 6.4°C.</p> <p>Severe Warm Night: When minimum temperature departure $>6.4^{\circ}\text{C}$.</p>
Cold Wave	<p>When minimum temperature of a station $\leq 10^{\circ}\text{C}$ for plains and $\leq 0^{\circ}\text{C}$ for hilly regions.</p> <p>(a). Based on departure</p> <p>Cold Wave: Minimum Temperature Departure from normal -4.5°C to -6.4°C.</p> <p>Severe Cold Wave: Minimum Temperature Departure from normal $\leq -6.5^{\circ}\text{C}$</p> <p>(b) Based on actual Minimum Temperature (for Plains only)</p> <p>Cold Wave : When Minimum Temperature is $\leq 4.0^{\circ}\text{C}$</p> <p>Severe Cold Wave: When Minimum Temperature is $\leq 2.0^{\circ}\text{C}$</p> <p>(c) For Coastal Stations</p> <p>When Minimum Temperature departure is $\leq -4.5^{\circ}\text{C}$ & actual Minimum Temperature is $\leq 15^{\circ}\text{C}$</p>
Cold Day	<p>When minimum temperature of a station $\leq 10^{\circ}\text{C}$ for plains and $\leq 0^{\circ}\text{C}$ for hilly regions</p> <p>Based on departure</p> <p>Cold Day: Maximum Temperature Departure from normal -4.5°C to -6.4°C.</p> <p>Severe Cold Day: Maximum Temperature Departure from normal $\leq -6.5^{\circ}\text{C}$</p>
Fog	<p>Phenomenon of small droplets suspended in air and the horizontal visibility $< 1\text{km}$</p> <p>Moderate Fog: When the visibility between 500-200 metres</p> <p>Dense Fog: when the visibility between 50- 200 metres</p> <p>Very Dense Fog: when the visibility < 50 metres</p>
Thunderstorm	<p>Sudden electrical discharges manifested by a flash of light (Lightning) and a sharp rumbling sound (thunder)</p>
Dust/Sand Storm	<p>An ensemble of particles of dust or sand energetically lifted to great heights by a strong and turbulent wind.</p>
Frost	<p>Ice deposits on ground</p> <p>Air temperature $\leq 4^{\circ}\text{C}$ (over Plains)</p>
Squall	<p>A strong wind that rises suddenly, lasts for atleast 1 minute.</p> <p>Moderate: Wind speed 52-61 kmph</p> <p>Severe: Wind speed 62-67 kmph</p> <p>Very Severe: Wind speed >67 kmph</p>
Sea State	<p>Effect of various waves in the sea over specific area</p> <p>Rough to very rough: Wind speed 41-62 kmph (22-33 knots) & Wave height 2.5-6 metre</p> <p>High to very high: Wind speed 63-117 kmph (34-63 knots) & Wave height 6-14 metre</p> <p>Phenomenal: Wind speed >117 kmph (>63 knots) & Wave height >14 metre</p>
Cyclone	<p>Cyclonic Storm: Wind speed 62-87 kmph (34-47 knots)</p> <p>Severe Cyclonic Storm: Wind speed 88-117 kmph (48-63 knots)</p> <p>Very Severe Cyclonic Storm: Wind speed 118-165 kmph (64 - 89 knots)</p> <p>Extremely Severe Cyclonic Storm: Wind speed 166-220 kmph (90 -119 knots)</p> <p>Super Cyclone Storm: Wind speed >220 kmph (>119 knots)</p>

* Red colour warning does not mean "Red Alert", Red colour warning means "Take Action".
Forecast and Warning for any day is valid from 0830 hours IST of day till 0830 hours IST of next day.
For more details, kindly visit <https://mausam.imd.gov.in> or contact: 011-2434-4599
(Service to the Nation since 1875)